



Background

- The University of New Mexico Comprehensive Cancer Center (UNMCCC) is the only NCI-designated Cancer Center in New Mexico.
- The UNMCCC is dedicated to overcoming the cancer burden in our catchment area and beyond by serving:
 - Multiethnic, multicultural and geographically dispersed populations
 - Sexual gender minorities
 - Each with strikingly different patterns of cancer incidence, mortality, and disparity.



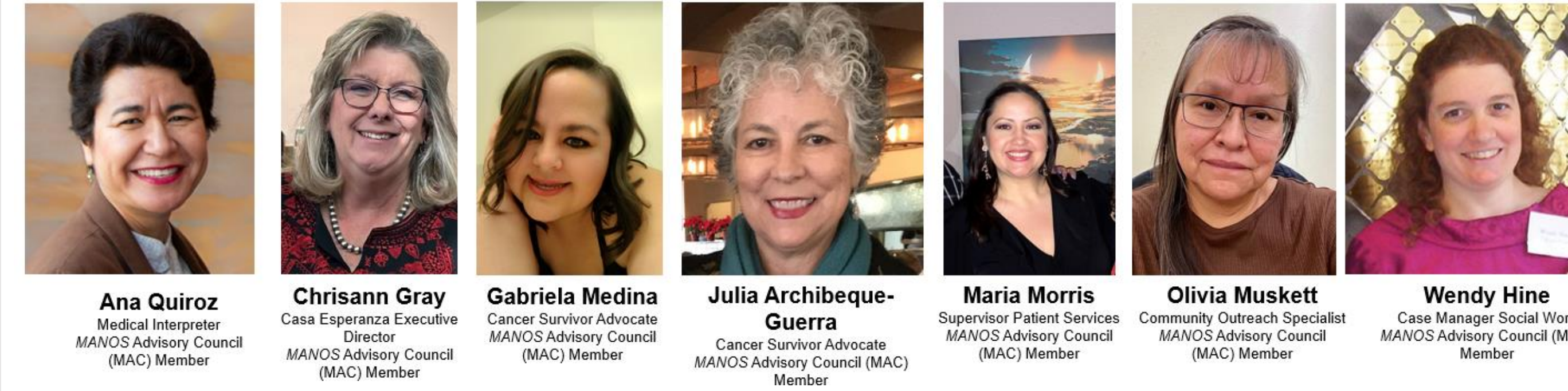
Project Design/Methods

- The following are major *MANOS PNP* objectives:
- Convene the *MANOS* Community Advisory Council (MAC).
 - Develop, implement and evaluate a pilot Patient Navigation Program.
 - Coordinate and standardize *Manos PNP* data management and reporting systems.
 - Implement bi-directional care-coordination among oncology nurse navigators and patient navigators focused on the patient needs

| Oncology Patient Navigator | Financial Oncology Patient Navigator | SDoH Oncology Patient Navigator | Emotional Support Oncology Patient Navigator | Clinical Treatment Oncology Nurse Navigator | Clinical Trials Oncology Nurse Navigator | Survivorship Oncology Nurse Navigator |
|---|--|--|---|--|--|---|
| <ul style="list-style-type: none"> Conducts PSA Enrolls Patient | <ul style="list-style-type: none"> Medical insurance Connects patient to internal and external financial resources | <ul style="list-style-type: none"> Resolution of barriers identified by patient on the PSA. | <ul style="list-style-type: none"> Reviews score from DT Refers patient to internal and external support groups | <ul style="list-style-type: none"> Clinical education and support throughout treatment Scheduling Connects patient back to patient navigators | <ul style="list-style-type: none"> Clinical trials education Re-screening & referring based on eligibility | <ul style="list-style-type: none"> Education on post-treatment f/u Survivorship Plan Refers to community resources Refers to PCP for continuity of care |

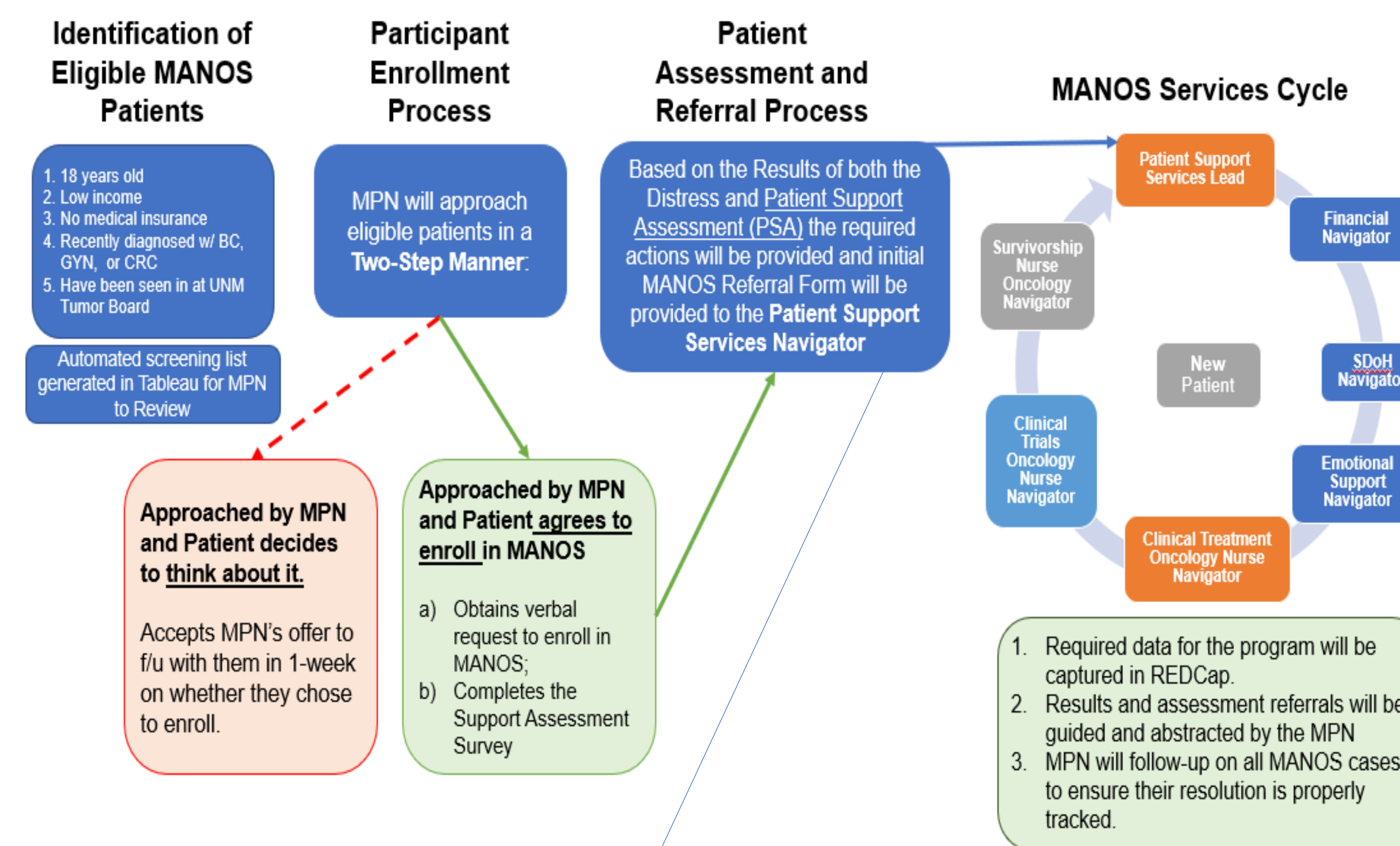
Interim Results

MANOS Advisory Council Member Board



Major contributions of the MAC include:

- MANOS Patient Support Assessment in (English and Spanish).
- MANOS Dynamic Two-Step Enrollment Method.
- MANOS Enrollment Materials and Handouts.
- MANOS Services Pathway.
- MANOS Patient Navigation Job Posting.
- MANOS Logo.
- MANOS Initial Referral Form (IRF).



Innovation

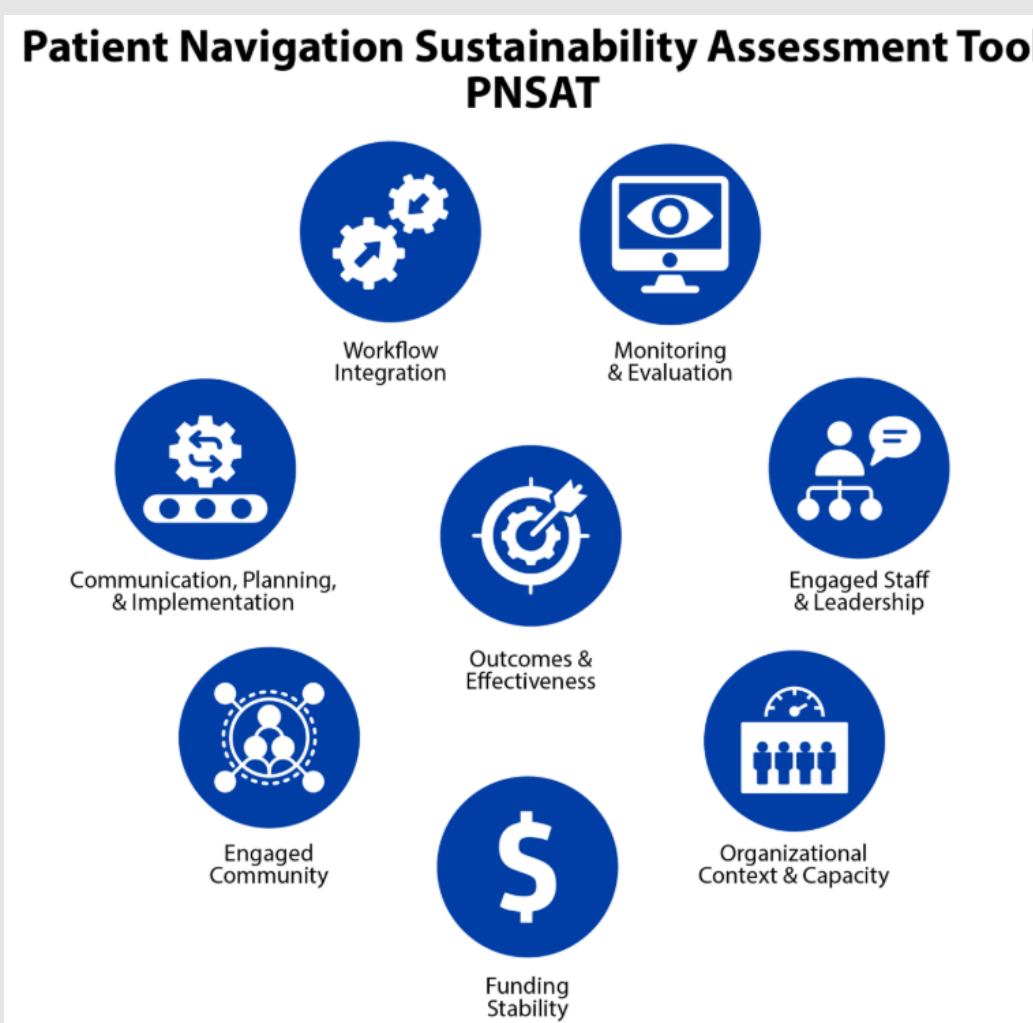
- Patient-centered social determinants assessment tool
- Measurement: proxy measures for treatment initiation:
 - Work with IT and clinical teams to identify high disparity cancers and monitor outcomes
 - Begin with examining timeliness to treatment for cervical cancer patients and expand to other cancers
- Tumor Board recruitment process:
 - Clinical group engagement on identification of eligible patients at early stage of treatment

Implications for Sustainable Practice

| Score | Engaged Staff and Leadership | Organizational Context and Capacity | Funding Stability | Engaged Community | Communication, Planning and Implementation | Workflow Integration | Monitoring & Evaluation | Outcomes & Effectiveness | Overall Score |
|-------|------------------------------|-------------------------------------|-------------------|-------------------|--|----------------------|-------------------------|--------------------------|---------------|
| | 5 | 4 | 3 | 6 | 4 | 3 | 4 | 4 | 4.13 |

The Patient Navigation Sustainability Assessment Tool (PNSAT) guides evaluative activities:

- Higher scoring PNSAT domains include engagement of staff and leadership, community engagement and evaluation components
- Pending challenges include funding stability and workflow integration
- Continued dialogue to ensure sustainability is ongoing



Next Steps:

- Analyze successes, challenges and outcomes of MANOS, using a Health Equity lens and participatory processes.
- Fully integrate MANOS into broader patient navigation services at UNMCCC.
- Disseminate outcomes and strengthen patient navigation efforts statewide.

